



General Contracting
Decoration & Fitout

About Us

Saf Innovative was established in 2012 in Jeddah, Saudi Arabia by experienced founders in management, development and construction, our vision is to become a leading construction company in the region.

With an outstanding engineering team, qualified manpower and worldwide alliance design companies and specialized art craft factories we aim to focus on high end construction projects such as hotels & hospitality, restaurants, commercial centers luxurious boutiques and banks.



Visions

We believe that teamwork, expert consolidation and know how partnership is the key in maintaining sophisticated high end project.

Our team expertise carried from initial stages such concept development, budgeting, project scheduling to design construction.

By maintaining the spirit of executing a high end master piece; we thrive to be the best solution to our customer.



Divisions

With strong industrial and management background we, Saf Innovative seek challenging sophisticated high end projects to our portfolio.

Our divisions are:

Hotels & Hospitality

Noticing the importance of tourism and hospitality field, we created a division totally dedicated to this field.

Our hotels and resorts construction approach relies mainly on the understanding of hospitality requirements both in design and implementation stage.

Whether working on design provided by operator or developing concept based on investor or operator needs, we provide tremendous care to comply with the best international standards.

Our experiences cover both public areas such lobbies, banquet halls, meeting rooms, restaurants, coffee shops, other technical support services and rooms such FF&E and bathrooms.



Engineering and design

Throughout the variety hotels and mock up room projects we participated in, we gathered important library of designs and standards of requirement.

Our design office acquired a selective experience and capability of proposing options and alternatives to operators and investors.

Knowledge of material and creativity in color selection became the most contribution of our success.

Material resourcing

When it comes to deciding materials we are aware of the importance of quality.

Therefore we possess a wide network of suppliers such carpets, lighting fixtures, fabrics, decoration and other miscellaneous accessories that are best in their specialty from local to Europe.

Fabrication and installation

Together with our affiliated wood work factory, our workmanship and suppliers network in Europe, we produce and supply variety of wood work design components such wardrobes, head boards, doors, counters, stairs and other wood decorations.

With open eyes our quality control teams ensure both the production and installation process reach the sites within given contractual time.

Restaurants

Restaurant business has a different know how construction both in technical and decoration.

In order to achieve a unique, cozy and functional atmosphere, working on restaurant project involves multitude requirements to fulfill.

From introducing graphics and memorabilia to concept, technical requirements such kitchen ventilation, kitchen equipment coordination, to decorating dining area have been listed in our restaurant and dining project experience.

We developed within our wood work factory specialized division for shop fittings, counters and decoration for commercial centers, luxurious boutiques and restaurants well equipped with appropriate technical human resource and technology.



Commercial Centers & Luxurious Boutiques

We acquired huge experience in commercial centers and luxurious boutiques projects from the previous companies that helped founding it.

(Compass Contracting 2004-2011, Rasha Establishment 1986-1995, and National Wood Work Co., 1995-2003).

Our decoration division works to emphasis meticulous design, shop drawings and details.

At Saf Innovative quality is paramount and craftsmanship is our heritage. From material sourcing, cutting and assembly to finishing, packing, delivery and installation we enjoy every stage of projects at the same high level of attention of detail.

Our involvement starts from concept to design development, trade contracting jobs to shop fabrication fittings in our factory. We provide every project with the same care and attention, whether serving a project for small or big project.

With rich library of fabrication and know how detained by our engineers, architects, craftsmen and painters we are reaching the high recognized level.

We understand that the true meaning of the business adage is "time is money".



Banks

As the finance industry is expanding, banks and finance institution launched variety of financial program through their branches. Our first approach was gaining pre-qualified in most existing banks in Saudi market.

With our design & construction library, resources, we are enlarging our experience in developing banks branches construction and renovation.



Means

Engineering

We possess a qualified team of architects and engineers with long experience in the field of high end projects such as hotels, commercial centers, banks and more.

With their knowledge and capability they work in team with talented draftsmen and AutoCAD operators with mastery of shop drawings and details.

Outsourcing

An established large network of both locally and abroad from Middle East, Asia, Europe and USA who are known by their specialties covering furniture, fabric materials, lighting fixtures, marbles & tiling, wood and more.

Outsourcing process begins from manufacture selections under engineering team and quality control supervision to local and international shipping arrangement controlled by our purchasing department in accordance to our project schedule.

Planning and scheduling

We believe that proper scheduling is the essence of all organizations. In attempt to maintain the project scheduling keep on track we are supported with well-known software.

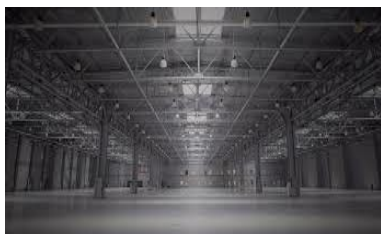
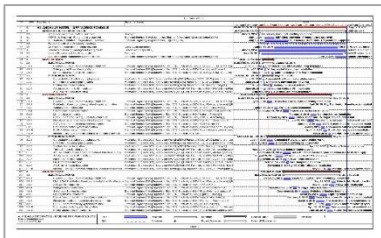
Manpower

Our finishing workers for tiling, painting, gypsum workers, and electro-mechanical teams. In case concrete work is involved we use recognized and specialized companies coordinated by our teams.

Our manpower resource is composed with engineers from The Middle East such Egypt, Syria, Yemen, Philippines and skilled workers with various specialties from Pakistan, India, Egypt, Indonesia and Philippines.

Equipment Maintenance & Storage Facilities

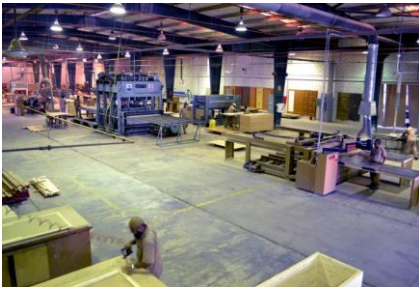
We manage our equipment maintenance and storage facilities at our own warehouse and coordination with our affiliated wood work factory.



Wood Work Factory

Our affiliated woodwork factory is woodwork factory in western region of the kingdom and has been producing hundreds of thousands doors and other wood furnishings for various construction project in Saudi Arabia and region.

To fulfill the high demand in construction market the factory modernized its equipment technology and created new lines for more specific, high level fabrication and sophisticated wood manufacturing. The factory divided into three divisions:



Doors

Wooden door division is the historical division to the factory.

It had carved its reputation with over hundreds of thousands wooden doors manufacturing.

From simple flush to high decorative design doors manufactured up to thousands piece every month. The factory acquired licenses for fire rated door American standard as well as British standard.

Decoration

The factory has as well equipped with decoration division which recently supported with new art machineries to facilitate fabrication works.

With highly qualified engineering and fabrication team, the division is capable to produce range of variety project that required details and shop drawings.

Decoration fields concern:

Walls and ceilings

Claddings

Counters

Decorative Wood Works

Decorative Wood Ceilings

Wall and floors cladding

External Wood Works like pergolas, shades, seats etc.

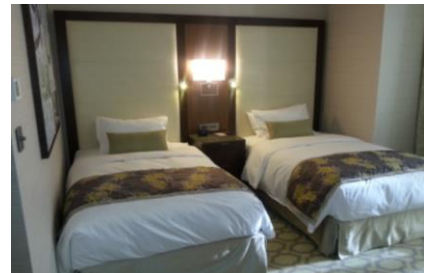
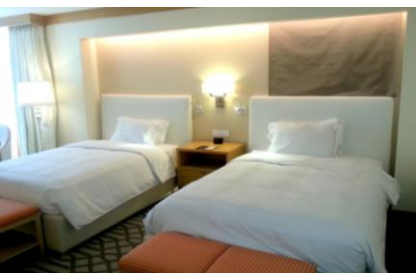


The huge hospitality expansion in the kingdom motivates the factory to create division to related field.

With three decades of experience and knowledge in wood work manufacturing, accompanied with management, engineering and related expertise sources us is in capable to fulfill the demand of hotel & hospitality market.

Exposition Area

In 2014 the factory signed a contract with Jabal Omar Development Project (JODP) to establish a permanent mock up room for Hilton JODP Makkah and Hilton Double Tree Makkah on the factory area.



Quality Policy Statement

1. Statement of Intent

As an aspiring leading construction company in the kingdom, Saf Innovative will spare no efforts to commit to quality best practices in order to achieve outstanding finishes results and client satisfaction.

2. Quality Vision and Target

Our Vision is based on the belief that through true leadership, involvement of people, system management, implementing processes and having a continual improvement approach we can achieve a top quality finished product. We plan to ensure we understand our customers' requirements and strive to exceed their expectation.

Our Target is to aim for zero reworks and to deliver our sites as snag free as possible.

3. How We Plan to Achieve It

a. A continual improvement approach using PDCA method:



b. Team responsibilities:

Quality can only be ensured through a holistic process starting from the design phase, through procurement, work implementation to final handing over of the product.

Teams are therefore responsible and accountable for the following:

Design team:

- In house design must be coordinated / optimized and workable for site team
- Details in drawings are reviewed to be workable, clear and correct.
- Coordinate design output and or changes properly
- Timely issuance of approved drawings to site team

Procurement team:

- Be knowledgeable about various product ranges and types
- Consider workability, environmental effects and consistency
- Review design and technical details carefully
- Establish mutual beneficial reliable supplier relationships

Site team:

- To effectively and efficiently resolve site constraints in liaison with design team
- Ensure stage by stage inspections are conducted
- Defective works & bad practices are controlled immediately and rectified
- Defects are controlled not to repeat.

To ensure that teams deliver their responsibilities we rely on:

c. List of deliverables and documentations

Design:

- Drawing list and schedule
- Drawing pre-submittal checklist
- Drawing pre-submittal reviewing process

Procurement team:

- Material Data sheet (MDS)
- Sample approval
- Material delivery checklist

Site team:

- Method Statement (MS)
- Inspection & Test plan (ITP)
- Quality Inspections
- Nonconformance report (NCR)
- Site Design Amendment Request (SDA)

d. Training and skill building

Immediate Supervisors must train their staff and external training must be provided whenever required.

e. Maintaining and building the company knowhow

Through a well-organized archiving system we are able to reach information quickly, improve our decision making, work efficiently and maintain the company knowhow.

We also work on establishing and keeping track of quality best practices and no dos through a site/procurement/design feedback loop. We aim to learn from our mistakes to prevent any reoccurrences.

e. Reporting & Auditing:

Internal Quality specialists will actively advise and support management in identifying areas of improvement and audit the different departments to ensure key processes are followed and satisfying results are being achieved.

4. **Where and when to Implement**

The above is to be applied throughout all the company's divisions, sites and by all of its employees, from the planning stage of a project to its handing over. No shortcuts will be tolerated.

5. **In Conclusion**

A quality product will enhance our team's and customer's satisfaction, creating a positive impact on our image and our margin.



Health & Safety Policy Statement

1. Statement of Intent

As an aspiring leading construction company in the kingdom, Saf innovative will spare no effort into committing to health and safety world's best practices in order to create a safe working environment for our employees and partners.

2. Vision and Target

Our Vision is built first of all on respect for people, we believe that all injuries and incidents are preventable and that this can be achieved if all people are to be responsible and demonstrate their commitment. Therefore we believe in a top down commitment policy where line managers are responsible and accountable for the care of their workplace, activities and people. Our aim is to create a positive and forward thinking health & safety culture that is adopted throughout the whole of the business.

Our Target is to strive for zero major injuries, as well as zero lost time accidents, zero work related ill health and zero serious incidents by 2020.

3. How We Plan to Achieve It

a. Creating a safety culture: Safety is everyone's responsibility

All persons are to actively cooperate, communicate, contribute and achieve the standards set in the Policy and procedures. Actions will be taken to both encourage demonstrable commitment and where required to improve any less than acceptable standards or situations. Through communication and personnel training we are set to create a company safety culture.

b. Process and procedures:

Before the start of any new activity a risk assessment should be put in place to reduce any potential risk:

Hazard Identification -> Risk Evaluation -> Risk Control Measures -> Reduced Risk Evaluation

In order to assess the hazard risk the company will follow the below Matrix:

Hazard Severity (a)

- 1 – Trivial (discomfort, slight bruising, self-help recovery)
- 2 – Minor (small cut, abrasion, basic first aid need)
- 3 – Moderate (strain, sprain, incapacitation > 3 days)
- 4 – Serious (fracture, hospitalisation >24 hrs, incapacitation >4 weeks)
- 5 – Fatal (single or multiple)

Likelihood of Occurrence (b)

- 1 – Remote (almost never)
- 2 – Unlikely (occurs rarely)
- 3 – Possible (could occur, but uncommon)
- 4 – Likely (recurrent but not frequent)
- 5 – Very likely (occurs frequently)

		Hazard Severity (a)				
		1	2	3	4	5
Likelihood of Occurrence (b)	1	1	2	3	4	5
	2	2	4	6	8	10
	3	3	6	9	12	15
	4	4	8	12	16	20
	5	5	10	15	20	25

Rating Bands (a x b)		
LOW RISK (1 – 8)	MEDIUM RISK (9 - 12)	HIGH RISK (15 - 25)
Continue, but review periodically to ensure controls remain effective	Continue, but implement additional reasonably practicable controls where possible and monitor regularly	-STOP THE ACTIVITY- Identify new controls. ACTIVITY must not proceed until risks are reduced to a low or medium level



For the control measures, the company will follow ERICPD procedure:

Eliminate -> Reduce -> Isolate -> Control -> Personal Protective Equipment -> Discipline

Discipline will be used as a last resort, and when applied it must be done consistently

c. **Our Main focus and priorities**

In addition to the usual activity based risk assessment, we have established 5 hazards which will require the company's special attention:

- Housekeeping
- Working at Height
- Electrocution
- Fire Hazard
- Tools

We will issue a safe working procedure and best practices guideline for the above hazards.

d. **Reporting & Auditing:**

It's positive to report all incidents, near misses and unsafe situations and people. We will learn from our mistakes through an open and cooperative approach to incident reporting, investigation and actions to prevent a reoccurrence. Internal health and safety specialists will actively advise and support management in identifying areas of improvement.

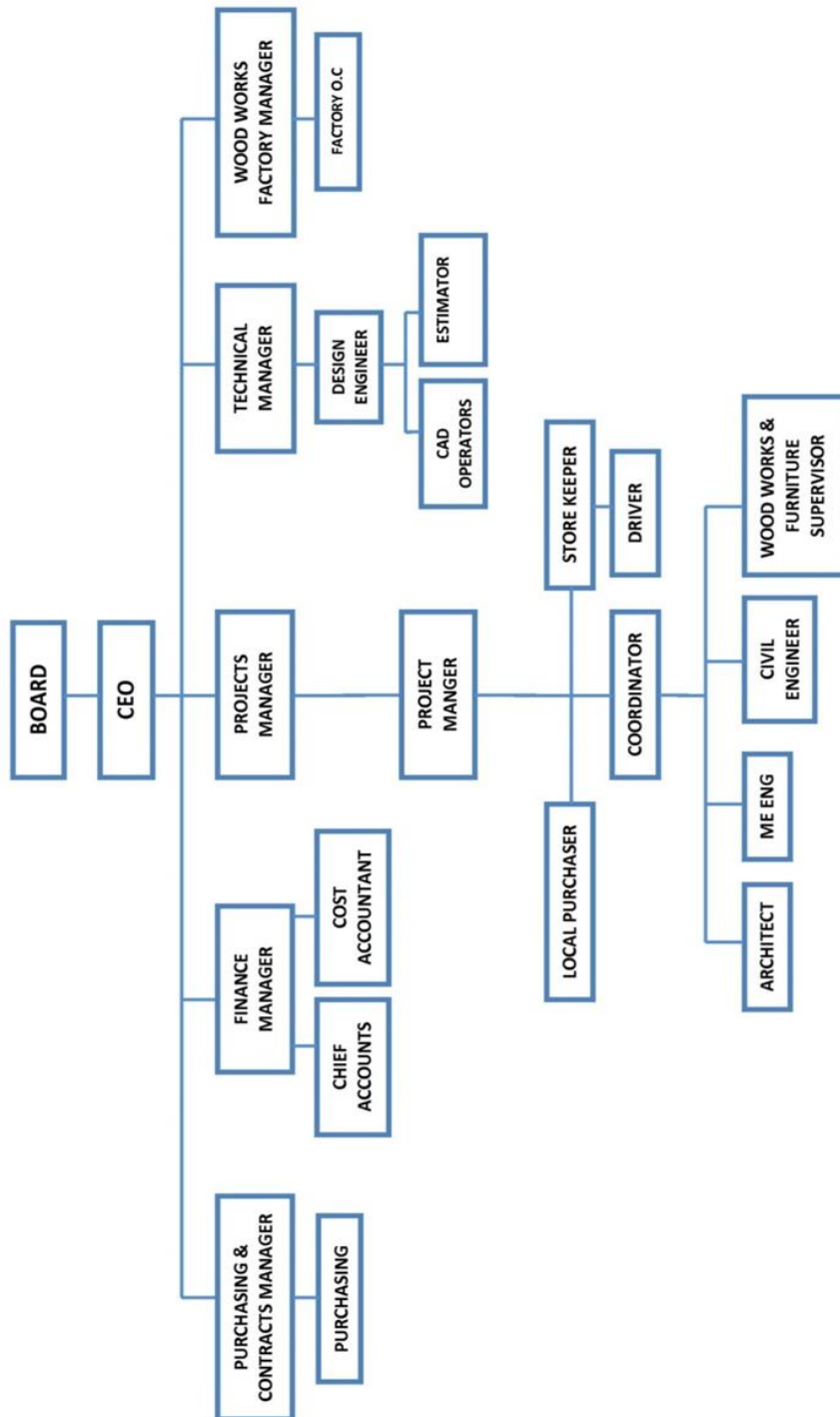
4. Where and when to Implement

The above is to be applied throughout all the company's divisions, sites and by all of its employees, from the planning stage of a project to its handing over. No shortcuts will be tolerated.

5. In Conclusion

A safe workplace will enhance our team's and customer's satisfaction, creating a positive impact on the community and our margin.

SAF INNOVATIVE ORGANIZATION CHART





Hospitality Projects
New Building Projects

Radisson Blu Riyadh Chamber of Commerce (2019)



Located in Riyadh international convention & exhibition center. The hotel when completed is set to serve 32 suites & 197 rooms, podium, all day dining areas, VIP lounge, business executive lounge, ballrooms, swimming pool, etc.

Saf Innovative is doing all the public areas finishing, wooden works and decoration like marble, decorative steel works, lighting, fixed furniture and FF&E....



The Address Hotel, Jabal Omar Makkah (2019)



Located in Jabal Omar Development Makkah just in front of the holy Mosque Al Haram. The Twin Tower hotel is set to become one of Makkah landmark Hotel buildings. When completed, the hotel is will serve 50 suites & 1600 rooms, Lobby lounge, All day dining areas, Executive Lounge etc.

Saf Innovative is doing all the podium Millwork and claddings, like counters, banquettes, wooden & steel claddings, wall special finishes...



Nobu Hotel Riyadh (2018)

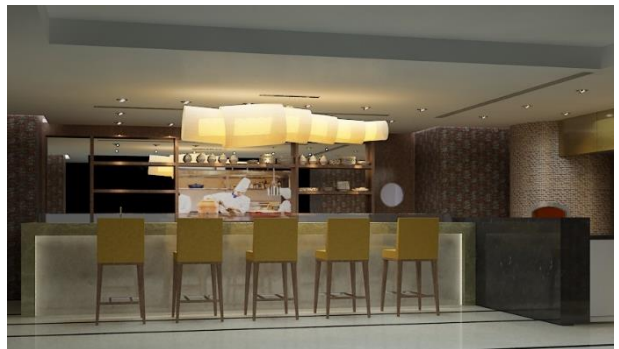


Located in Al Anoud Tower, King Fahad Road, Riyadh. The hotel serves 29 suites & 105 rooms, sushi restaurant, all day dining areas, cigar lounge, majlis, business executive lounge, ballrooms, swimming pool, etc.

Saf Innovative participates in completing all the finishing & wooden works like counters, honey comb pattern wooden decoration, room furniture, glass & stainless steel works.



Nobu Hotel Riyadh, Presidential and Guest Rooms



Nobu Hotel Riyadh, Restaurant & Sushi Bar Area



Nobu Hotel Riyadh Public Areas: Arrival Lobby, Spa & Ballroom



Shaza Jabal Kaabah, Makkah (2016-2018)

Located in Jabal Ka'aba Makkah, the hotel serves 251 rooms and sites, all day dining areas and other public areas such majlis, business center, kids center, prayer rooms, all-purpose function rooms and more.

SAF INNOVATIVE participates in supplying and installing wooden works such wardrobes, headboards, doors, claddings & *mashrabias*, fixed furniture, kitchen and counters.



Typical rooms, Shaza Jabal Kaabah Makkah



Podium floor and restaurant, Shaza Jabal Kaabah Makkah



Penthouse and corridors, Shaza Jabal Kaabah Makkah



Radisson Blu Corniche Jeddah (2018)



The latest project with Radisson Blu on North Corniche Road, Jeddah.

Saf Innovative participated in completing supply & installation of woodworks such furniture, wall claddings, decorations and art works for the hotel covering rooms, elevators and public areas.



Radisson Blu Corniche Jeddah, Rooms



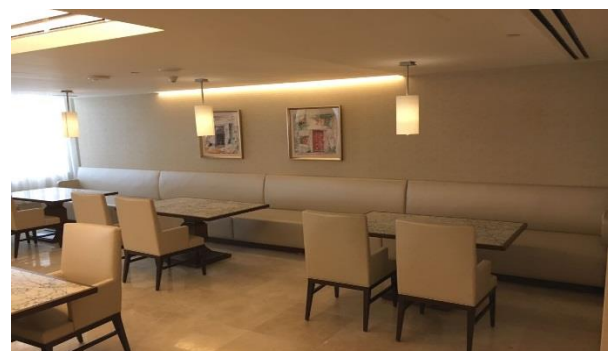
Radisson Blu Corniche Jeddah, Public Areas



Hilton Convention Hotel, Jabal Omar Makkah (2016)

An FF&E project where Saf Innovative supplied & installed banquettes for Hilton Makkah Convention Hotel, Jabal Omar Makkah.

We outsourced the materials from Europe and United States and manufactured the custom made banquettes in Italy.



Hilton Convention Hotel Jabal Omar Makkah, Banquettes



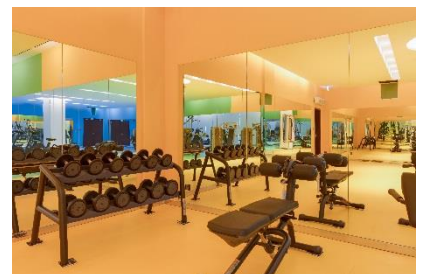
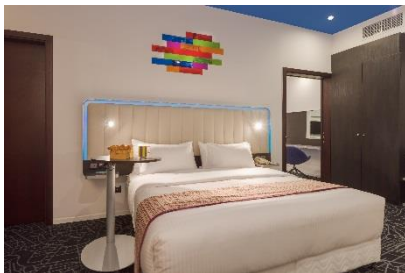
Park Inn Dammam (2016-2018)



The newly opened hotel Park Inn by Radisson Blu is located in 2nd Industrial Area Dammam.

The hotel presents to the first business niche hotel in the city, serving 260 guest rooms and public areas with sophisticated design.

Saf Innovative involve on MEP, finishing & fit out works.



Park Inn Dammam, 2nd Industrial Area



Radisson Blu Resort Jizan (2014-2015)

Radisson Blu Resort Jizan presents to be the first business niche hotel in the city.

The hotel is serves 260 guest rooms and public areas such lobbies, restaurants, meeting rooms with sophisticated design.

Saf Innovative participated in delivering, MEP, finishing & fit out works.



Radisson Blu Resort Jizan, Guest Rooms



Radisson Blu Resort Jizan Public Area

Holiday Inn Jeddah Gateway (2013-2015)



Holiday Inn Jeddah Gateway located in distance of ten minutes driving to King Abdul Aziz International Airport Jeddah. The hotel becomes one of the high preference destination to stay in Jeddah.

Saf Innovative participated in the hotel construction providing FF&E covering rooms and public areas such as corridors, elevator lobbies, meeting rooms, spa & gyms.



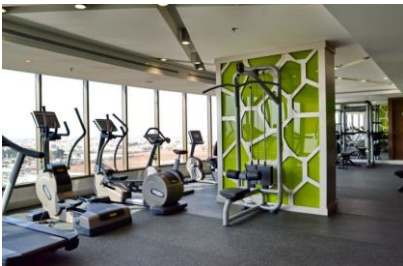
Holiday Inn Jeddah Gateway



Holiday Inn Jeddah Gateway, Guest Rooms



Holiday Inn Jeddah Gateway, Meeting Rooms



Holiday Inn Jeddah Gateway, Spa & Gym Areas



Hospitality Projects
Renovation Projects



Pullman Hotel Jeddah (2014-2016)

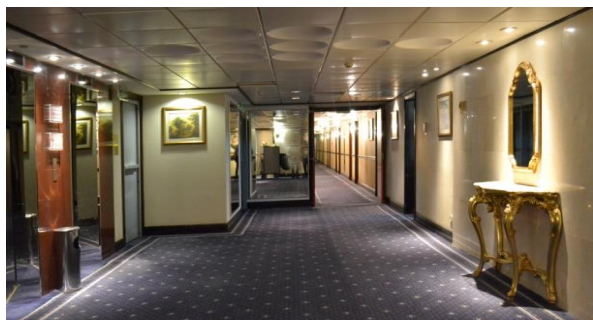
Pullman Hotel Jeddah previously known Al-Hamra Sofitel Hotel Jeddah located in famous Palestine Street. The five stars hotel has been serving for three decades mainly to the business community to fulfill the high demand of tourism market. After decades the hotel requires a serious renovation plan.

Saf Innovative undertook research on several criterias, hotels target market and budgeting plan with its owner as well as following the brand changing from Sofitel Hotel to Pullman.

Saf Innovative performed mockup room to Pullman standard and undertook renovation program in 253 rooms gradually covering FF&E, electromechanical and woodworks.



Pullman Hotel Jeddah Guest Rooms & Public Area



Pullman Hotel Jeddah Before and Post Renovation



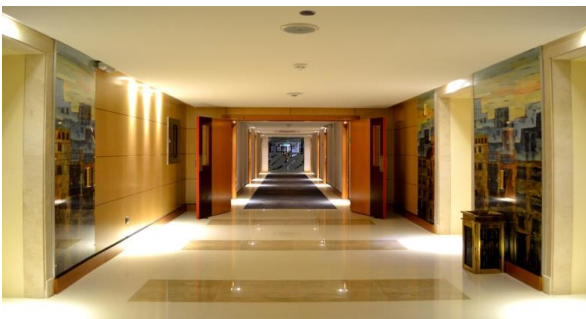
Red Sea Palace Hotel Jeddah (2013-2014)

Red Sea Palace is one of Jeddah's land marks. The Hotel used to be among the best ranked hotel in 1970s. Located in old city, Red Sea Hotel has a strategic position as surrounded with banks, corporate buildings and few minutes' walk to traditional market.

With 269 rooms, restaurants, meeting rooms and fitness center, this four stars hotel needed a renovation which Saf Innovative participated in 2013-2014.

Concentrating on the first and second floor in 2013, the project gradually continue to 3rd – 4th floor in 2014 covering rooms, lobby and public areas.

The renovation includes electromechanical, finishing, FF&E and wood work installation.



Red Sea Palace Hotel Jeddah Before and Post Renovation



Holiday Inn Alsalam Jeddah (2013)

This hotel is another landmark of Jeddah. Located in heart of the city in Old Makkah District, near to historic district Balad and old Mecca Road, the Hotel used to serve the pilgrims.

Serving 350 rooms, restaurant, meeting room and business center, however this four star hotel needs renovation undertook by Saf Innovative in 2013.

The renovation carried few phases in every floor which includes finishing work and FF&E.



Holiday Inn Alsalam Jeddah Post Renovation



Retaj Albayt Makkah (2013)

This hotel is another landmark of Jeddah. Located in heart of the city in Old Makkah District, near to historic district Balad and old Mecca Road, the Hotel used to serve the pilgrims.

Serving 350 rooms, restaurant, meeting room and business center, however this four star hotel needs renovation undertook by Saf Innovative in 2013.

The renovation carried few phases in every floor which includes finishing work and FF&E.



Retaj Albayt Makkah, Post Renovation



Retaj Albayt Makkah – Before Renovation, Renovation Plan and Post Renovation



Radisson Blu Plaza Jeddah (2015)

Another working experience with Radisson Blu, located in Prince Majid Road Jeddah. It was a short project where Saf Innovative awarded FF&E contract for 116 rooms distributed on 10 floors.



Golden Tulip Hail (2012)

Saf Innovative participated on Golden Tulip Hail hotel renovation covering finishing, electromechanical trades in addition to FF&E and wood work installation.



Khalidia Apartments Jeddah (2012)

An FF&E project where Saf Innovative supplied & installed loose furniture, woodworks in addition to finishing works.



Restaurant Projects



Benihana Restaurant Jeddah (2018)

A renovation project covering civil and finishing works with traditional Japanese concept.

The restaurant areas divided by two main areas, single and family sections. 15 teppan kitchens on family areas and 6 teppan kitchens on single areas with sushi bars.



Benihana Restaurant Jeddah



Byblos Express Restaurant Jeddah (2017)

Byblos Restaurant is known as one of authentic modern Lebanese culinary destination.

Managed by Leylaty Group, the restaurant is presenting its express dining line from Byblos Restaurant.

SAF INNOVATIVE involves in finishing works, wood work, furniture installation and MEP on this project.



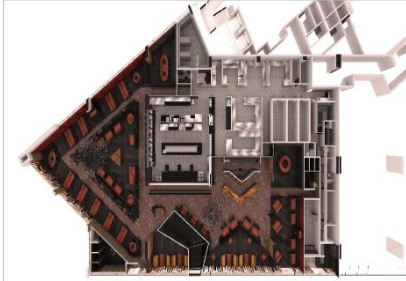
Byblos Express Restaurant Jeddah



Toki Restaurant Riyadh (2016-2017)

Toki Restaurant is a famous Chinese cuisine restaurant manage by Leylaty Group. Located in Riyadh, the restaurant built on 1,121 m² area with capability to accommodate up to 300 visitors.

We completed the turnkey project covering MEP and finishing works.



Toki Restaurant Riyadh

Multaqa Restaurant (2016)



Multaqa Restaurant is another landmark of Jeddah. The restaurant has been known as a seafood buffet restaurant.

After serving more than 25 years the restaurant requires a new look. Saf Innovative involved in coordination of MEP, completed finishing and decoration works.



Multaqa Restaurant Jeddah

Rico Restaurant Jeddah (2016)



A renovation project covering finishing & fit out works. Located in Jeddah Cornice, the sophisticated restaurant serves Spanish culinary, divided into family, bachelor & atelier sections on 441m² areas.



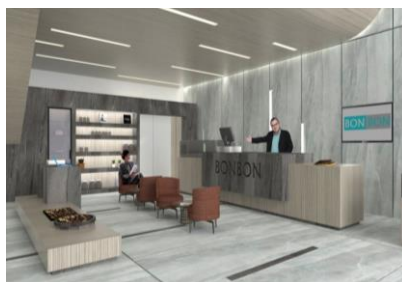
Rico Restaurant Jeddah

Bon Bon Jeddah (2016)



Located in King Road, Bon Bon is one of the well known destinations for patisseries and chocolate.

The café built on 192.42 m² divided into 2 levels, ground floor and mezzanine floor, currently is on renovation and we in participate in finishing works.



Bon Bon Jeddah



Offices Projects



Lotus Offices Jeddah (2015)

Located in Jeddah, Lotus is an office of Leylaty Group with sophisticated and luxurious design. Saf Innovative carries out finishing, decoration works.



Lotus Offices Jeddah

Shaikh Abdulelah M. Almaghrabi Office, Jeddah (2015)

A short finishing project that covers cladding, wall covering and office fit-out.



Shaikh Abdulelah M. Maghrabi Office



Alhokair Group Western Region Head Office (2013)

One of leading corporate group in Saudi Arabia, Saf Innovative participated in their office renovation project covering finishing, decoration and woodworks.



Alhokair Group Western Region Head Office. Jeddah



Residential Projects

Oceana Resort (2019)

Located in King Abdullah Economic City (Kaec), Oceana Resort is a 50 villas Beach resort on the sea shore.

Saf Innovative carried out full renovation works for 2 villas in a fast track 30 days project.





Airport Projects

Royal Terminal - King Khalid International Airport Riyadh (2017)



An interior design (ID) renovation project at Royal Terminal, King Khalid International Airport Riyadh at Ground Floor & 1st Floor.

The project covered finishing works, woodworks supply & installation, as well as decoration works.



King Khalid International Airport Riyadh, Royal Terminal

Previous Airport Project

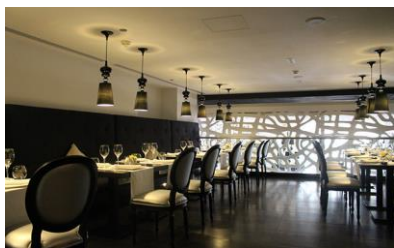
Airport Lounge - King Khalid International Airport Riyadh (2011)



A structural renovation works covering refurbishment, finishing, MEP and FF&E works for joint venture companies; Adel Abul Jadayel Flight Catering Co and Singapore Airlines at King Khalid International Airport Riyadh lounge.



Previous Achievements



Palmeras Restaurant Jeddah (2010)

Located on the famous Olaya District Riyadh, Palmeras Restaurant is well known as its authentic Mediterranean cuisine.

Decoration works and wood works had been carried out on the restaurant project covering all dining areas.



Bhar Restaurant Jeddah (2010)

Bhar Restaurant serve fin Lebanese grill, the restaurant located in the beach at King Abdullah Economic City (KAEC). We carried out wood works & decoration project on this restaurant.



Fitaihi Showroom Etoile Center, Jeddah (2007)

Fitaihi Showroom Jeddah is a luxurious jewelry brand that expects high end finishing quality & decorative works. We delivered a complete turn-key project including installation of fit-outs, all MEP works and security & protection system for the showroom.

Previous Achievements

Restaurant & Dining

2002	Chilli's Restaurant (Jeddah)
2006	Bonnon Coffee (Aziz Mall Jeddah, Fakieh Hospital, Obeikan, Aljamea) Carvel & Cinnabon (Alkhobar& Riyadh), Casper & Gambini (Dhahran Mall) Mélange (Tahlia, Jeddah)
2007	The Pizza Company & Swensen's Ice Cream (Olaya Riyadh, Sahara Mall)
2009	Sushi Yoshi Restaurant (Jeddah, Riyadh)
2010	Bharat Restaurant (Stars Avenue Jeddah)
2011	El Chico (Riyadh)

Luxurious Boutiques

2005	<i>Faces (Serafi Mall)</i> <i>Lacoste, Marlboro, L'occtaine, St. Dupont and Clinique (Dhahran)</i>
2006	<i>Tanagra (Ile Boulevard, Centria Riyadh and Jeddah)</i> <i>Céline (Centria Riyadh)</i> <i>The Body Shop (Sultan Mall, South Mall, Yamamah, Najjar Mall)</i> <i>Mikyaji (Otaybia, Najjar, Serafi Mall, Dakheel, Jamea Mall, Abraj Mall)</i>
2007	<i>Tags (Roshan Jeddah, Hayath Riyadh)</i> <i>Davidoff</i> <i>Fitahi (Jeddah)</i>
2008	<i>Diesel (Red Sea Mall, Alkhobar)</i> <i>Tumi (Stars Avenue Jeddah)</i> <i>Valentino (Khayat Center Jeddah)</i> <i>Marc Jacob (Khayat Center Jeddah, Stars Avenue Jeddah, Kingdom Center Riyadh)</i> <i>Anya Hindmarch (Riyadh)</i>
2009	<i>Valentino (Khayat Center Jeddah)</i> <i>Paul & Smith (Stars Avenue Jeddah)</i> <i>Bon Point (Stars Avenue Jeddah)</i> <i>Carolina Herrera (Stars Avenue Jeddah)</i>
2010	<i>Etoile</i> <i>Marc Jacobs (Doha)</i> <i>Christian Louboutin</i> <i>Christian Dior (Khayat Center Jeddah)</i>

Airport, Utility Buildings & Banks

2011	<i>Airport Lounge, King Khalid International Airport Riyadh</i>
2006	<i>Nafeesa Shams School</i> <i>Saudi Oger Power Plant</i> <i>Riyadh Stock Yard</i>
2008	<i>Muna General Hospital</i> <i>Equestrian Men and Women's Club at Park Hyatt Project Jeddah</i>
2009	<i>SABB Jeddah & Qatif Branch</i> <i>Alinma Bank Arar & Tabuk Branches</i> <i>ANB Jeddah Head Office</i>

Commercial Centers

2005	<i>Mobily (Queens Building, Aljamea, and Sherafi Mall Jeddah, Dar Tauhid Makkah)</i>
2006	<i>Danube Supermarket & Food Court (Heraa Jeddah)</i>
2008	<i>TOYOTA-Abdul Lateef Jameel Jeddah Auto Mall</i>

Hospitality

2010	<i>Novotel (Jeddah, Makkah, Dammam)</i> <i>Sofitel Alkhobar Public Areas</i>
2011	<i>Swiss Hotel Makkah</i>



جموعة الحكير
al hokair group



شازا
SHAZA
HOTELS

NOBU HOTELS



PULLMAN
HOTELS AND RESORTS

SOFITEL
LUXURY HOTELS

swissôtel
Hotels & Resorts



Casper & Gambini's



ANYA HINDMARCH
LONDON

ChristianDior

CÉLINE

DIESEL

MARC JACOBS

TUMI



Tanagra

S.T. Dupont
PARIS



VALENTINO

Christian
Louboutin

SABB ساب



العربي
anb

مصرف الإنماء
alinma bank



Certificate of Accomplishments



Project Management - Sheikh Suleiman Abdul Aziz Al-Rajhi
is pleased to present this

Certificate of Appreciation

to

Saf Innovative for Construction Ltd.,

In recognition and sincere appreciation to the successful completion of woodworks,
decoration works and FF&E at rooms & public areas of
Shaza Hotel Jabal Kaabah Makkah in 2016-2018.

Makkah, May 24th 2018

Sheikh Suleiman Abdul Aziz Al-Rajhi



Sulaiman A. Al-Rajhi Real Estate Investments Co. شركة سليمان عبدالعزيز الراجحي للاستثمارات العقارية
Riyadh 11424 | Kingdom of Saudi Arabia | P.O. Box : 14022 | C.R. 1010179090 | C.C 124808
Tel: +966 11 244 0303 | Fax: +966 11 471 6168 | info@alrajhiinvestments.com | www.alrajhiinvestments.com

شهادة إنجاز
Certificate

This is to testify that SAF Innovative for Construction Ltd. was part of the construction operation of Park Inn Hotel at Dammam 2nd industrial city as the finishing contractor of a total work area of 17,766 m².

During the execution of their scope of work, SAF Innovative showed high degree of professionalism, commitment and quality of work. They earned our satisfaction and handed over the work on May 3rd, 2018 which will encourage us to get engaged with them in future business.

بهذا تشهد شركة تضامن الهمة بأن السادة "شركة سعف الرائدة للبناء المحدودة" كانت طرفاً في عملية إنشاء مشروع فندق بارك إن بالمدينة الصناعية الثانية في الدمام كمقاول تشطيبات للمشروع بمساحة مبنية بلغت 17,776 م².

وقد أظهرت شركة سعف الرائدة للبناء خلال تنفيذ حصتها من المشروع مستوى رفيعاً من التعامل المهني والالتزام وجودة عالية في التنفيذ، وبذلك حصلت على رضانا وإستحققت شهادة التسليم الإبتدائي التي حصلت عليها بتاريخ 3 مايو 2018 م، مما يشجعنا للدخول في أعمال مشتركة معهم في المستقبل.

الدمام، 16 مايو 2018

Dammam, May 16, 2018

Dr. Abdulaziz Y. Al-Babutain
Chairman
Tadamoun Alhimmah



الرياض 11685 | ص.ب 102993 | س.ت 2051054914 | شركة تضامن الهمة
هاتف +966138870345 فاكس +966138871022 | المملكة العربية السعودية

Certificate of Appreciation

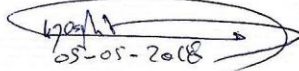
To Whom It May Concern,

We, Alhokair Group hereby states that M/s Saf Innovative for Construction Ltd has completed Furniture, Fixture & Equipment (FF&E) works at Holiday Inn Jeddah Gateway Project, covering suite rooms and public areas in 2015 with quality in according to project specification and guidelines and adhered to project schedule.

We are confident of the contractor's capability to execute the projects and recommend it to any party.

This certificate has been issued on the contractors request without any
Issued this on May 5th 2018 in Jeddah, Kingdom of Saudi Arabia.

Arch. Joseph N Habre
Projects Manager
Alhokair Group


05-05-2018



Certificate of Recognition شهادة شكر و تقدير

This is to testify that **Saf Innovative for Construction Ltd** was part of our operation at Radisson Blu Resort Jizan, performing MEP, finishing and supply and installation Furniture, Fixture and Equipment (FF&E).

Saf Innovative showed proficiency performing their part of the project, handing over their part in the specific project time frame without delays or discrepancies. Thus they earned our gratitude for the quality work and professional performance.

In recognition of their excellent performance, with encourage us to engage with Saf Innovative in future business.

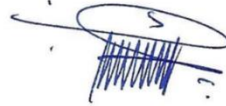
Jeddah, May 6th 2018

بهاذا تشهد مجموعة الحكير بأن السادة "شركة سعف الرائدة للبناء المحدودة" كانت طرفا في عملياتنا في مشروع فندق منتجع راديسون بلو جيزان ، كمقاول اعمال كهربائي ، أعمال التشطيب و توريد و تركيب الأثاث والمعدات والتجهيزات.

أظهرت شركة سعف الرائدة للبناء المحدودة مستوى مهني مرتفع بتنفيذ حصتها من المشروع وتسليمها في الوقت المحدد للتنفيذ دون أي تأخير أو ملاحظات على التنفيذ. وبذلك حصلت على عرفاننا بجودة الأعمال و حسن التنفيذ بالإضافة إلى المهنية الإدارية .

إقرارا منا بحسن التنفيذ ، مما يشجعنا للدخول في أعمال مشتركة مع شركة سعف الرائدة للبناء في المستقبل.

جدة ، 6 مايو 2018



Badr Khalid Abdul Mohsen Alhokair
Deputy Chief Executive Officer
Alhokair Group



Certificate of Appreciation

This is to certify that M/S SAF INNOVATIVE for Construction Co. Ltd has been successfully completed the construction projects on listed hotel & hospitality sites below:

1. Golden Tulip Hail in 2013, renovation project involves wood work installation and FF&E.
2. Red Sea Palace Hotel Jeddah, the First Contract in 2013. Renovation project concentrating on 1st-2nd floor carried electromechanical trades, wood work installation, FF&E and finishing work.
3. Red Sea Palace Hotel Jeddah, the Second Contract in 2014. Renovation project concentrating on 3rd-4th floor carried electromechanical trades, wood work installation, FF&E and finishing work.
4. Holiday Inn Al-Salam Jeddah in 2013. The project concentrating on rooms carries wood work installation, FF&E and finishing work.
5. Al-Hokair Group Western Region Head Office, in 2013 renovation project covering wooden works installation, FF&E and decoration.

We appreciate the efforts put in by their team at all stages, resources deployed and cooperation extended for the satisfactory and timely completion of the projects. We wish them success for all their future assignments.

With best wishes

Badr Khalid Abdulmohsin Al-Hokair
Executive Vice President
Al-Hokair Group






Legal Documents



وزارة التجارة والاستثمار
Ministry of Commerce and Investment

رؤية 2030
المملكة العربية السعودية
KINGDOM OF SAUDI ARABIA

٧٠٠١٧١٢٤٣٤

٤٠٣٠٢٢٦٨٣٨

١٤٣٣/٠٥/٢٣ هـ

الرقم:

التاريخ:

شهادة تسجيل الشركة

الاسم التجاري للشركة: شركة سف الرائدة للبناء المحدودة

نوعها: ذات مسئولية محدودة

مدة الشركة: ٩٩ سنة

مركزها الرئيسي: جدة حي الروضة شارع الأمير سلطان عمارة امتنت الدور ٤

ص ب: ١٣١٧٥ الرمز البريدي: ٢١٤٩٣ هاتف: ٦٩٠١٥١٨

النشاط: الإنشاءات العامة للمباني السكنية،* الإنشاءات العامة للمباني الغير السكنية،* وشمل (المدارس، المستشفيات، الفنادق... الخ)*، ترميمات المباني السكنية والغير سكنية،*، تشطيب المباني *

*النشاط يتطلب الحصول على ترخيص من وزارة الشؤون البلدية والقروية

رأس المال: ٥٠٠٠٠٠ ريال سعودي

المديرون: ماجد بن عبدالحسن بن عبدالعزيز الحكير

٣ بندر خالد بن عبدالحسن الحكير

٥ بندر خالد بن عبدالحسن الحكير

٧ بندر خالد بن عبدالحسن الحكير

٩ بندر خالد بن عبدالحسن الحكير

١١ بندر خالد بن عبدالحسن الحكير

سلطات المدير/المديرون: حسب ما نص عليه عقد الشركة

يشهد مكتب السجل التجاري بمدينة: جدة

وتنتهي صلاحية الشهادة في: ١٤٤٣/٠٥/٢٣ بموجب الإيصال رقم: ١٩٥٦٢٣٨١٠١ وتاريخ: ١٤٤١/٠٣/٢٢



مدير السجل التجاري للشركات: عبد المحسن بن إبراهيم الحما

التوقيع:

To verify the information of this certificate visit <http://v.mci.gov.sa>



شهادة اشتراك

قطاع خدمات المنسبين
إدارة خدمات العملاء

رقم الاشتراك: ١٦٩٥٥٨
تاريخ الاصدار: ١٤٣٨/٥/٢٣ هـ
الدرجة: الثانية
تاريخ الإنتهاء: ١٤٤٣/٥/٢٣ هـ

شركة سلف الزائدة للبناء المحدودة
شركة ذات مسئولية محدودة
تشهد غرفة جدة بأن

إلى عام ١٤٤٣ هـ

تاريخه ١٤٣٨/٥/٢٣ هـ

رقم السجل التجاري / الترخيص ٤٠٣٠٢٦٦٨٣٨

مدير قطاع خدمات المنسبين
محمد بن أحمد العطاس

أي كسب أو تعديل بهذه الشهادة تعتبر لاغية
(ينطبق الإلتساب في حالة سحب السجل التجاري المذكور في هذه الشهادة)

بيت أصحاب الأعمال

١٤٤١/٠٤/٢٠

التاريخ

٢٠١٩/١٢/١٧

الموافق

رمز الشهادة ٣١٣٨٥٦٤٠



شهادة

إسم المنشأة : شركة سعف الرائدة للبناء المحدودة

جدة

السعودية

رقم الإشتراك : ٥٠٥٢٦٨٤٢٣

رقم السجل التجاري : ٤٠٣٠٢٢٦٨٣٨

مصدره : جدة

رقما	كتابة	عدد المشتركين السعوديين
٩	تسعة مشتركين	عدد المشتركين غير السعوديين
٣٤	أربعة و ثلاثون مشتركا	المجموع
٤٣	ثلاثة و أربعون مشتركا	

تشهد المؤسسة العامة للتأمينات الإجتماعية بأن المنشأة المذكورة أعلاه قد أوفت بالتزاماتها تجاه المؤسسة وفق البيانات المقدمة منها حتى تاريخ إصدار هذه الشهادة ، والتي تم منحها لتقديمها لأية جهة تطلبها ، وهي صالحة لجميع الأغراض التي نص عليها نظام التأمينات الإجتماعية في المادة (٦/١٩) منه.

هذه الشهادة سارية المفعول حتى ١٤٤١/٠٥/٢٠ هـ.

يلزم التحقق من صحة وصلاحيه الشهادة عبر زيارة الرابط أدناه في الموقع الإلكتروني للمؤسسة العامة للتأمينات الإجتماعية أو عن طريق استخدام الرمز المعرف التالي :



www.gosi.gov.sa/vc

(الشهادة معتمدة من صاحب الصلاحية ولا تحتاج إلى توقيع أو ختم)



www.gosi.gov.sa
800 1243344



تعد هذه الشهادة من الوثائق الإلكترونية الحكومية الرسمية ، ويحظر قطعيا تقليدها أو إدخال أي تعديلات عليها سواء بالإضافة أو الحذف أو التغيير في بياناتها أو غير ذلك من أنواع التعديل . وتعد الشهادة لاجبة إذا شابها شيء من ذلك ، كما تعرض صاحبها للملاحقة النظامية أمام الجهات المختصة بالإضافة إلى مايفرضه نظام التأمينات الإجتماعية من عقوبات ، ولايجوز تداول الشهادة إلا في الأغراض التي أصدرت لأجلها وفقا لأحكام نظام التأمينات الإجتماعية ، والمؤسسة العامة للتأمينات الإجتماعية غير مسؤولة عن أي آثار أخرى مترتبة قبل الغير عن الشهادة وغير مسؤولة عن أي عملية تزوير أو تعديل تتم على البيانات الواردة فيها .



شهادة سعودة

تاريخ الإصدار : ١٤٤١/٤/٢٠
تاريخ صلاحية الشهادة : ١٤٤١/٧/٢٢
رقم الشهادة : ٢٠٠١٩١٢.١٥٦.٨

اسم المنشأة: شركة سعف الرائدة للبناء المحدودة

رقم الملف: ١٥٩.٤٠-٩

سجل تجاري: ٤٠٣.٢٢٦٨٣٨

الصادر من: جدة

تشهد وزارة العمل والتنمية الاجتماعية بأن المنشأة المذكورة أعلاه حققت نسب التوطين المطلوبة منها..
وتم منحها هذه الشهادة حسب طلبها

(الشهادة معتمدة من صاحب الصلاحية ولا تحتاج إلى توقيع أو ختم)

تنبيهات:

١ - يمكن التحقق من صحة وصلاحية الشهادة عبر زيارة الرابط: <http://mol.gov.sa/CERT>

٢ - في حال اكتشاف أي عملية تزوير في الشهادة المقدمة نرجو التبليغ عن ذلك بخطاب رسمي لأقرب مكتب عمل.



رقم الشهادة: ١٣٠٥٢٦٧٤٧
التاريخ: ١٤٤٠/١٢/٠٨ هـ
الرقم المميز: ٣٠٠٧٩٠٨٨٨٧



الهيئة العامة للزكاة والدخل
General Authority of Zakat & Tax

المملكة العربية السعودية
الهيئة العامة للزكاة والدخل
General Authority of Zakat & Tax

شهادة CERTIFICATE

تشهد الهيئة العامة للزكاة والدخل بأن المكلف / شركة سعف الرائدة للبناء المحدودة
شركة رقم ٧٠٠١٧١٢٤٣٤ وسجل تجاري رقم ٤٠٣٠٢٢٦٨٣٨
قدم إقراره عن الفترة المنتهية في ٢٠١٨/١٢/٣١ م

وقد منح هذه الشهادة لتمكينه من إنهاء جميع معاملاته بما في ذلك صرف مستحقاته
النهائية عن العقود.

يسري مفعول هذه الشهادة حتى تاريخ ١٤٤١/٠٩/٠٧ هـ الموافق ٢٠٢٠/٠٤/٣٠ م.
(السابع من رمضان ألف و أربعمئة و واحد و أربعون هجري)



الختم الرسمي

هذه الوثيقة مستخرجة من النظام الآلي ولا تحتاج إلى توقيع
لا يعتد بهذه الشهادة إلا بعد التحقق من موقع الهيئة www.gazt.gov.sa



تاريخ الإصدار: 2019/01/22
الرقم المميز: 3007908887



الهيئة العامة للزكاة والدخل
General Authority of Zakat & Tax



شهادة تسجيل في ضريبة القيمة المضافة VAT Registration Certificate

تشهد الهيئة العامة للزكاة والدخل بأن المكلف أدناه مسجل في ضريبة القيمة المضافة
بتاريخ 2017/08/25

Hereby, The General Authority of Zakat & Tax (GAZT) certifies that the taxpayer below is
VAT registered on 25/08/2017

Taxpayer Name:	شركة سعف الرائدة للبناء المحدودة	اسم المكلف:
VAT Registration Number:	300790888700003	رقم التسجيل الضريبي:
Effective Registration Date:	2018/01/01	تاريخ نفاذ التسجيل:
Taxpayer Address:	جدة، حي الروضة، شارع الأمير سلطان، 21493	عنوان المكلف:



كمكلف مسجل في ضريبة القيمة المضافة، لا يجوز لك تحصيل ضريبة القيمة المضافة من عملائك قبل تاريخ
نفاذ التسجيل بالضريبة. في حال تبين غير ذلك، ستقوم الهيئة العامة للزكاة والدخل بتنفيذ الغرامات المستحقة

هذه الوثيقة مرسلة من النظام الآلي ولا تحتاج إلى توقيع
- الهيئة العامة للزكاة والدخل -

الرقم ١٨٩٢١

التاريخ ١٤٤٠/٠٥/٢٩

رقم الملف ١٨٦٩٣



شهادة تصنيف لمقاولين

الجمهورية العربية السورية

وزارة الشؤون البلدية والقروية

وكالة الوزارة لشؤون تصنيف المقاولين

رقنر ٣١٩٩٨

الجنسية : سعودية

اسم المقاول : شركة سعف الرائدة للبناء المحدودة

نوع الملكية : شركة ذات مسؤولية محدودة

رقم السجل التجاري : ٤٠٣٠٢٢٦٨٣٨

العنوان : ص. ب. ١٣١٧٥ جدة ٢١٤٩٣

مجال التصنيف

تاريخه : ١٤٣٣/٠٥/٢٣

فاكس : ٦٩٠١٥١٧/٠١٢

مصدره : جدة

هاتف : ٦٩٠١٥١٨/٠١٢

الدرجة

الخامسة

المباني

(مصنف في مجال واحد فقط)

محمية

وكيل الوزارة لشؤون تصنيف المقاولين المكلف

م/ سعود بن حمدان الذكري



تنتهي صلاحية هذه الشهادة بتاريخ : ١٤٤٤/٠٥/٢٩ هـ

ملاحظة هامة جداً : يجب مطابقة الصور على الأصل في كل حالة .
كل كشط أو تغيير في هذه الشهادة يلغيها .



Alhumaidhi Center 4th Floor
Prince Sultan Road, Khalidia
PO Box 13175, Jeddah 21493
Kingdom of Saudi Arabia
T: 966 12 6901518, 6901519
F: 966 12 6901517
E: info@safinnovative.com
W: www.safinnovative.com

